

## Sample Questions - NORKA

### ➤ Numerical

1. Find the missing number in the given pattern

**4, 6, 12, 14, 28, 30, ?**

- A. 32
- B. 64
- C. 62
- D. 60

ANSWER: D

2. A train of length 150 m takes 10 seconds to pass over another train 100 m long coming from the opposite direction. If the speed of the first train be 30 kmph, the speed of the second train is

- A. 60 km/h
- B. 65 km/h
- C. 50 km/h
- D. 55 km/h

ANSWER: A

3. A two digit number is three times the sum of its digits. If 45 is added to it, the digits are reversed. The number is

- A. 23
- B. 32
- C. 27

D. 72

ANSWER: C

➤ **Logical**

1. How is Radha's mother's mother's daughter-in-law's daughter related to Radha?

- A. Sister
- B. Mother
- C. Cousin
- D. Aunt

ANSWER: C

2. In a certain code language if the word 'MUSEUM' is coded as 'LSPAPG', then how will the word 'PALACE' be coded in that language?

- A. OYIWX Y
- B. OYIXY W
- C. IYXYW O
- D. YXWY O I

ANSWER: A

3. Fifteen boys are standing in a row facing the opposite direction alternately from left to right. If the fourth boy from left is facing towards the east then the fifth boy from the right is facing which direction?

- A. South
- B. North-west
- C. East
- D. None of these

ANSWER: D

➤ **Verbal**

1. Antonym:FAMOUS

- A. disgraced
- B. unknown
- C. evil
- D. Popular

ANSWER: D

2. You haven't had your lunch yet, \_\_\_\_\_ you?

- A. Are
- B. are not
- C. have
- D. have not

ANSWER: C

3. Banks must be ensured that 18 percent of their loans are given to the agricultural sector.

- A. are ensured
- B. have to ensure
- C. being ensured
- D. should be ensured

ANSWER: B

➤ **Computer Fundamentals**

1. *BCD is*

- A. Binary Coded Decimal

- B. Bit Coded Decimal
- C. Binary Coded Digit
- D. Bit Coded Digit

ANSWER: A

2. '.JPG' extension refers usually to what kind of file?

- A. System file
- B. Animation/movie file
- C. MS Encarta document
- D. Image file

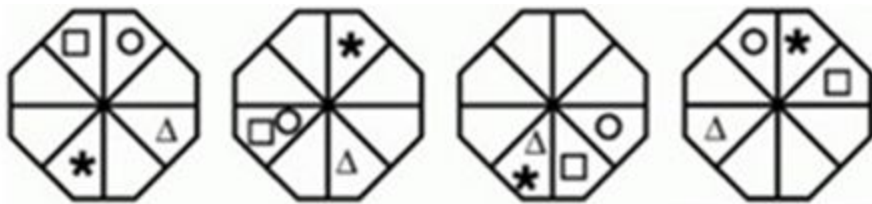
ANSWER: D

3. Modem stands for:

- A. Modulator Demodulator
- B. Monetary Devaluation Exchange Mechanism
- C. Memory Demagnetization
- D. Monetary Demarcation

ANSWER: A

**> Spatial Visualization**



1.

What will be the next pattern?



A.



B.



C.



D.

ANSWER: A

2. How many triangles are there in the figure?



A. 15

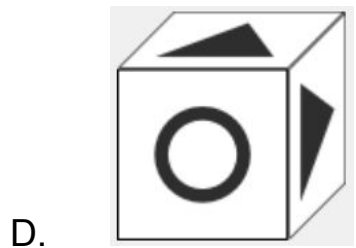
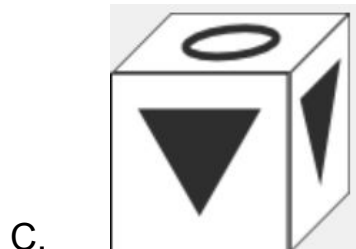
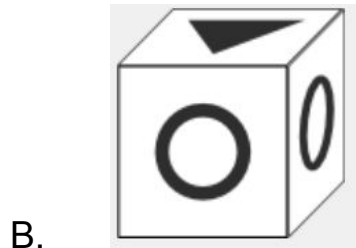
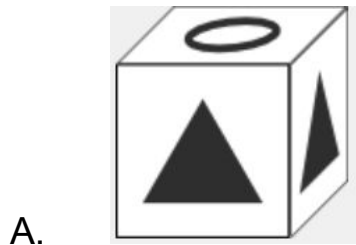
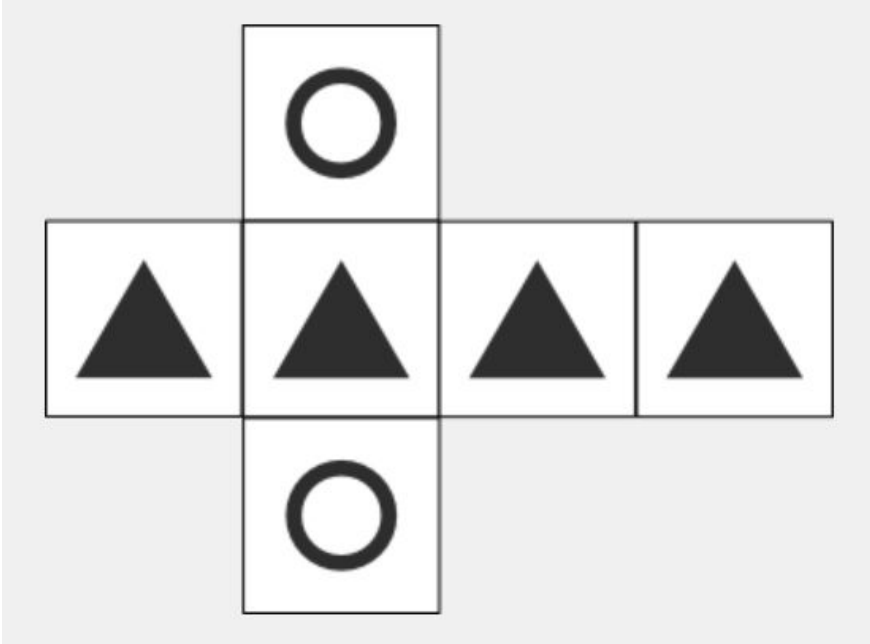
B. 14

C. 16

D. 20

ANSWER: A

3. Which cube cannot be made based on the unfolded cube?



ANSWER: B

➤ **Data Interpretation**

1. The following table gives the data about big 12 software exporters in India from 1997-98 to 1999-2000 (Revenue in Rs. crore).

	1997 – 98	1998 – 99	1999 – 2000
Tata Consultancy Services	955.27	1518.50	1820.35
Wipro	388.94	632.50	1037.30
HCL Technologies	446.53	862.14	908.00
Infosys	250.93	500.25	869.70
Satyam	178.11	376.62	662.93
NIIT	258.38	394.96	551.79
Silverline Technologies	45.32	103.95	434.83
Cognizant	113.16	290.03	414.26
Pentamedia	-	389.02	-
Pentasoftware	-	-	353.01
Patni Computers	137.58	219.90	295.51
IBM Global	115.32	227.63	271.14

1. What is the lowest rate of growth of 1998-99 to 1999-2000 for any of the companies given in the chart?

- A. 0%
- B. 12.7%
- C. 19.1%
- D. 5.3%

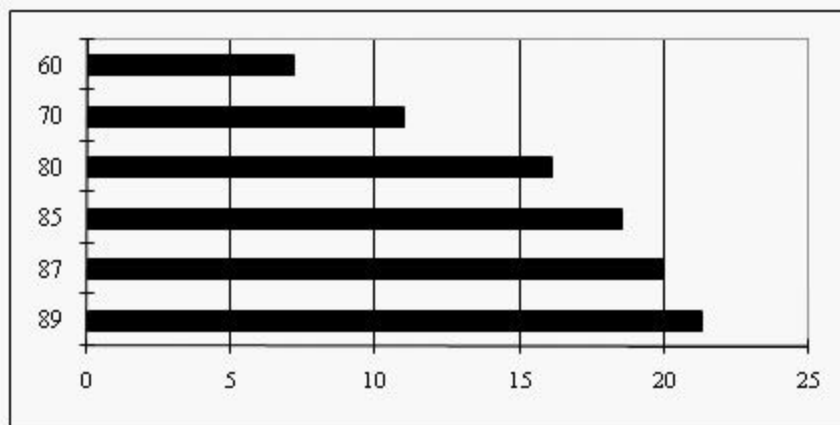
ANSWER: D

2. Which of the following statements is true about the share of exports of Tata Consultancy Services in the total exports of the 12 companies?

- A. It has almost doubled in 1999 – 00 over 1997 – 98.
- B. It has been steadily increasing
- C. It is more or less constant.
- D. It has dropped by about 10 %.

ANSWER: D

2. Refer to the following graph related to the percentage of persons over 25 years of age and with more than 4 years college education living in country X.



1. What percentage of persons of 25 and over completed 4 years of college or more in 1970?

- A. 7%
- B. 10%



- C. 11%
- D. 12.5%

ANSWER: C

2. What was the average percentage increase per year from 1970 to 1980?

- A. 0.5%
- B. 5%
- C. 0.7%
- D. 2%

ANSWER: B

### ➤ Computer Network & OS

1. In networking terminology UTP means

- A. Unshielded Twisted Pair
- B. Ubiquitous Teflon port
- C. Uniformly Terminating Port
- D. Unshielded T-connector Port

ANSWER: A

2. Which of the following IP addresses can be used as (a) loop-back addresses?

- A. 0.0.0.0
- B. 127.0.0.1
- C. 255.255.255.255
- D. 0.255.255.255

ANSWER: B

3. Match the following list1 with list2:

a. DMA I/O ----- 1. High speed RAM

b. Cache ----- 2. Disk

c. Interrupt I/O ----- 3. Printer

d. Condition code register ----- 4. ALU

A. a - 2, b - 1, c - 3, d - 4

B. a - 4, b - 1, c - 3, d - 2

C. a - 2, b - 3, c - 1, d - 4

D. a - 3, b - 4, c - 2, d - 1

ANSWER: A